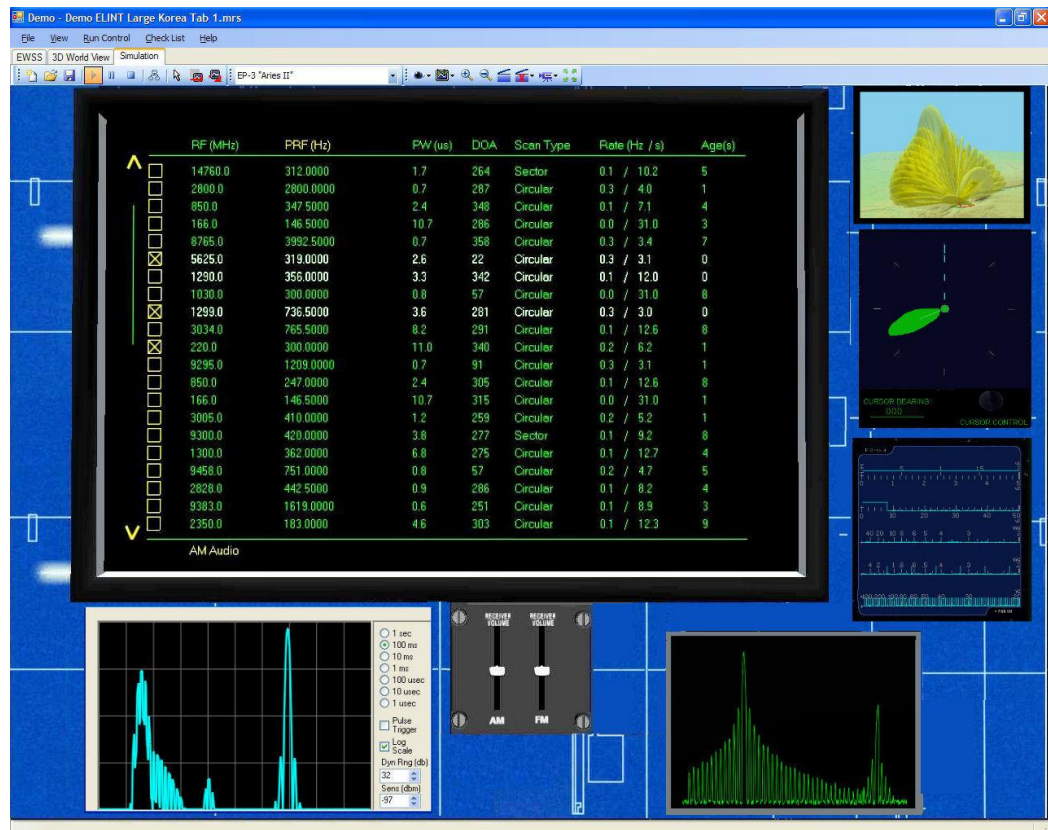


ELINT Proficiency Trainer

A Unique Training Resource

EWA GSI's ELINT Proficiency Trainer provides signal recognition training based on signal characteristics and signal audio. The trainer can be hosted on standalone PC(s) or used in a network environment for classroom training. EWA GSI's Electronic Warfare Scenario Simulator (EWSS) provides the desired signal environment. Each signal is scripted in the EWSS software by entering pulse characteristics, frequencies, scan pattern, scan time, beam widths in both the horizontal and vertical plain, and sidelobes if desired. The main display lists active signals with the following features:

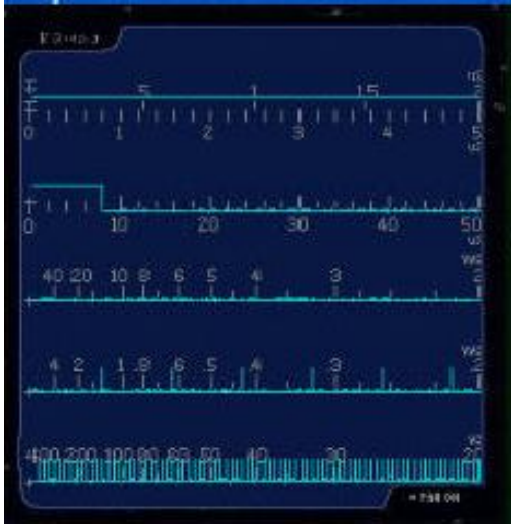
- **RF** in MHz
- **PRF** in Hz or **PRI** in μ sec changeable by selection
- **PW** in μ sec
- **Direction of Arrival (DOA)** in degrees
- **Scan Type** (Circular, Sector, Raster, etc)
- **Scan Rate** (Hz/seconds)
- **Age counter** (0 to 120 sec)
- **AM** or **FM** audio out selection
- Output selection on a per signal basis to enable audio/video out
- **Generic Oscilloscope** and **Volume Control** standard
- Optional **5 Trace**, **3D Beam Viewer**, **DF** and **Pan Display** available



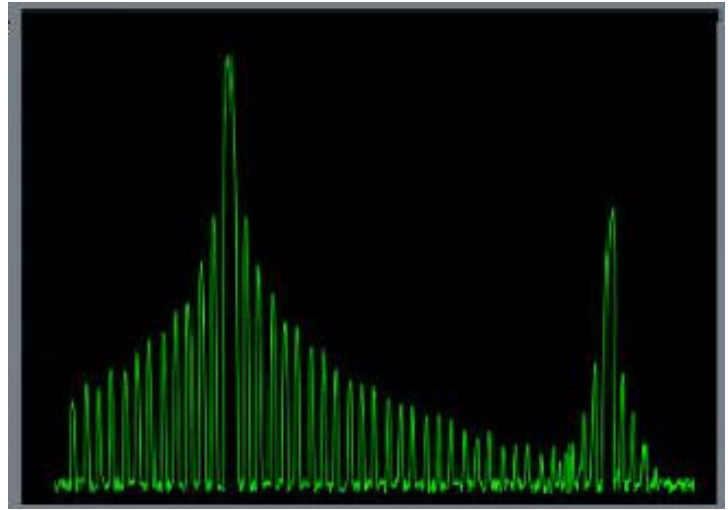
Tailor your Trainer with Optional Devices

To fit specific user requirements, additional device simulations can be designed and dropped-in to enhance and tailor the training experience (see below).

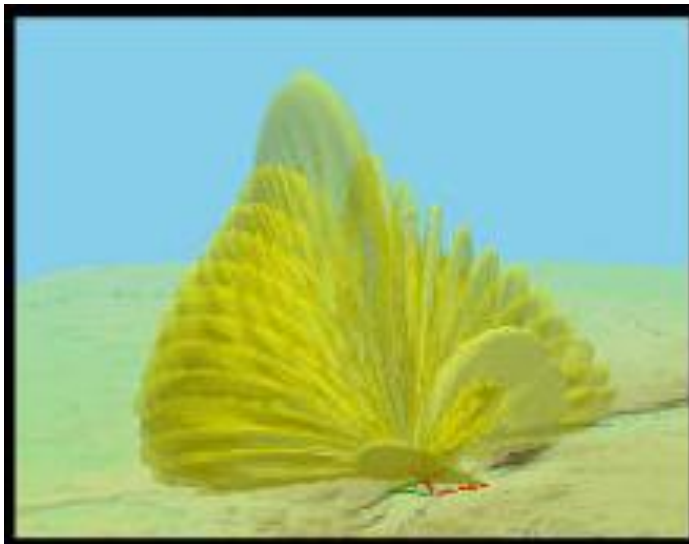
Additionally, EWA GSI can develop a wizard for direct parametric data importation from a user's parametric database into the corresponding emitter data fields within the EWSS program to simplify emitter creation.



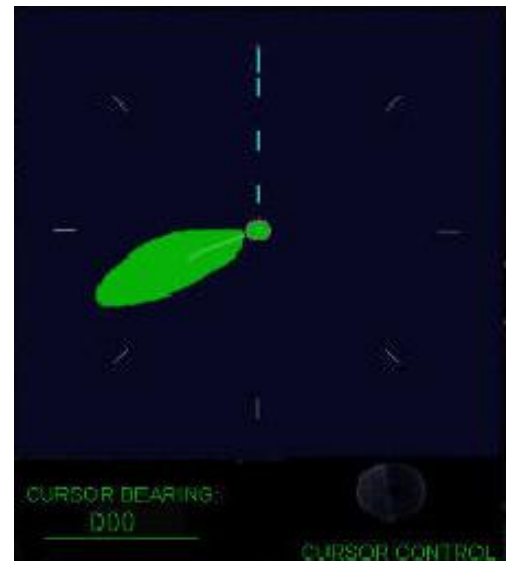
Pulse Analyzer



Receiver Pan Display



3D Beam Viewer



DF Display