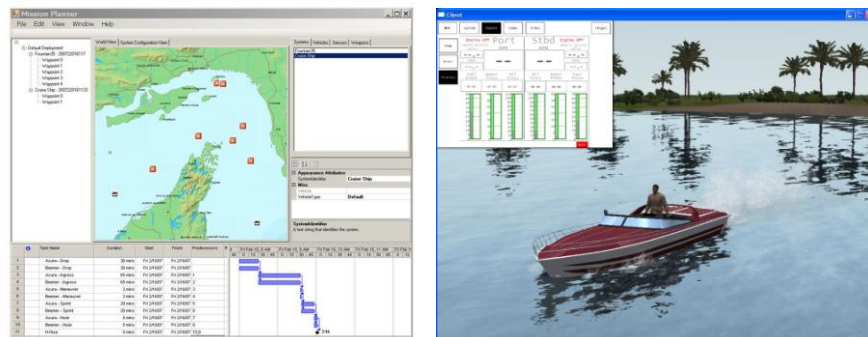


EWA VIKING

Defining Tactical Mobility Mission Planning

Plan to Succeed.

EWA VIKING, a tactical mobility mission planner portable software applications, serves as your **full lifecycle mission** planner to plan, rehearse, and review tactical missions in a 3D environment.



Before your mission

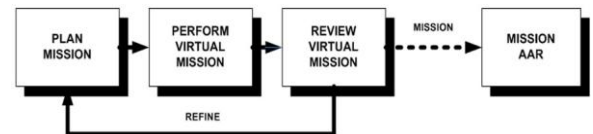
EWA VIKING's **intuitive mission checklist** helps you input your specific parameters—environmental conditions, timelines, tactics, and more—to create the virtual scenario that most accurately portrays your real world mission.

During your mission

With a **Gantt Chart styled mission timeline** integrated into the EWA VIKING display, you can check mission progress and events at a glance. The timeline features a **bump plan** that updates the display in real time should the mission rehearsal encounter any difficulties.

After your mission

Use EWA VIKING's **After Action Review** feature to rate the effectiveness of your plan, then refine the parameters as many times as you need until your mission is razor sharp. EWA VIKING updates your mission with each iteration of refinements, letting you test scenario variables and analyze the results.



Other key features to EWA VIKING include:

- Accurate vehicle physics
- Realistic vehicle response to various environments
- Lifelike visual acuity when driving a mobility platform in various environments
- Situational awareness data
- Target familiarization
- Probability data of being identified by hostiles



For more information, please contact:
 Rick Bailer, Senior VP for Special Programs
 or Erik Zinsmeyer, PM for EWA VIKING
 at 703.904.5700